

# ChemTest Phase I Project: Evaluation of Exposure Data for Consumer Products

K. Schneider<sup>1</sup>, T. Platzek<sup>2</sup>, G. Heinemeyer<sup>2</sup>, M. Doser<sup>3</sup>, M. Lahaniatis<sup>4</sup>, D. Papameletiou<sup>4</sup>

<sup>1</sup> FoBiG, Forschungs- und Beratungsinstitut Gefahrstoffe GmbH, Freiburg, Germany. <sup>2</sup> BfR, Bundesinstitut für Risikobewertung, Berlin, Germany.

<sup>3</sup> ITV, Institute for Textile Technology and Process Engineering, Denkendorf, Germany. <sup>4</sup> European Commission, Joint Research Centre, Institute for Health and Consumer Protection, Ispra, Italy



## ■ Introduction

The project (July 2006 - April 2007) aims at providing data input and structural developments for the EU Exposure Assessment Toolbox. Exposure data (chemical content, release, migration) will be compiled for the Toolbox on the following consumer product types:

- apparel/clothing
- home textiles
- carpets (textile floor coverings)
- automotive textiles
- toys
- non-woven personal care products (e.g. diapers, feminine hygiene liners)

## ■ What is the EU Exposure Assessment Toolbox?

The Toolbox was developed since 2003 at the Institute of Health and Consumer Protection (IHCP, Physical and Chemical Exposure Unit) of the European Commission's Joint Research Centre (JRC), Ispra, on behalf of the Directorate General for Health and Consumer Protection (DG SANCO). It

- provides structured information (exposure data, tools and scenarios) for the assessment of exposure to chemicals from consumer products.
- aims at supporting the information exchange among scientists and stakeholders
- aims at facilitating harmonised and up-to-date exposure assessments for consumer products.

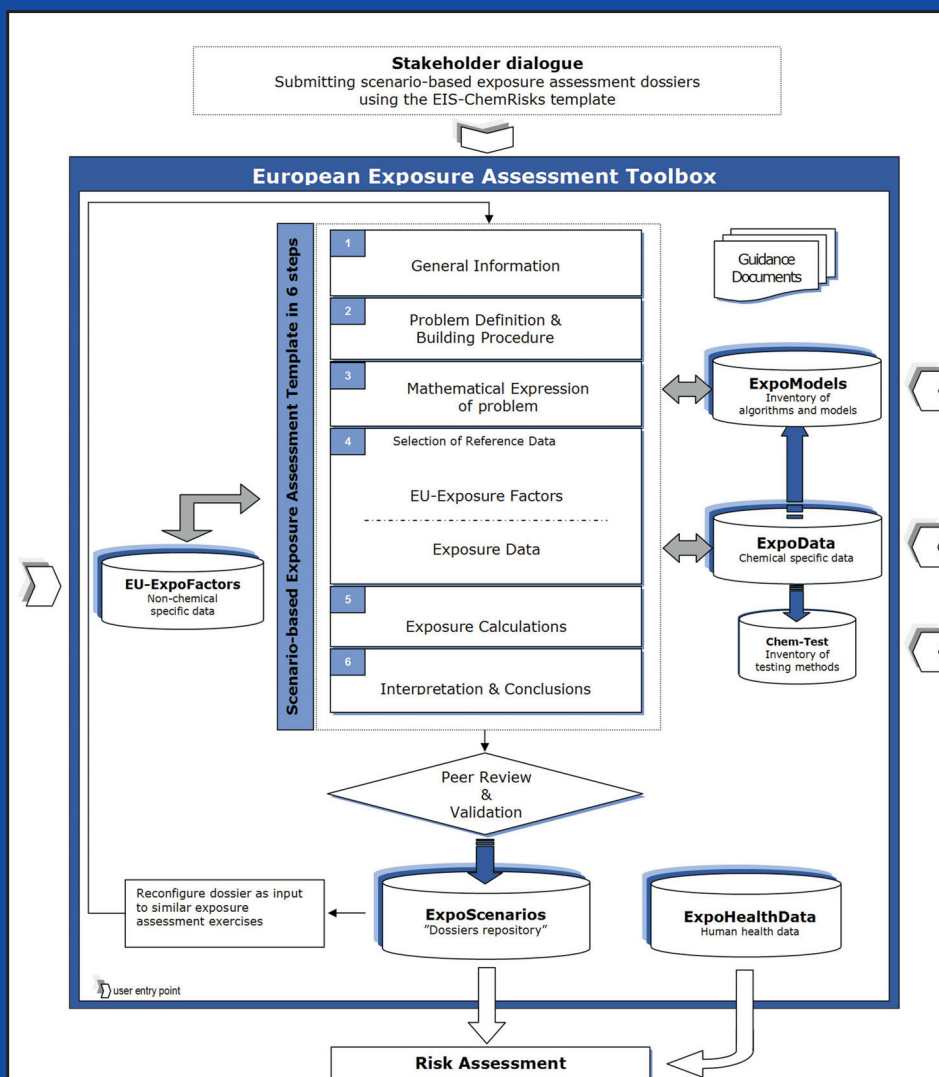
## ■ Objectives and Methodological Approach of ChemTest Phase I

- Search and compile test methodologies and exposure data on consumer products by extensive literature searches
- Evaluate and enter data into the Toolbox modules "ExpoData" and "ChemTest"
- Check workability and userfriendliness of these modules
- Make recommendations for further developments
- Initiate stakeholder communication and retrieve unpublished exposure data by an Europe-wide questionnaire survey
- Develop criteria for assessing quality of exposure data
- Report on data gaps, research needs and novel testing strategies

## ChemTest Phase I project:

"Compilation, analysis and evaluation of data and methodologies to qualitatively and quantitatively characterise human exposure to chemicals released from consumer products/articles"

## Structure of the Toolbox



## ■ Outcome

Until now the project ChemTest Phase I already delivered the following results and input to the Toolbox:

- Extended data searches yielded a comprehensive overview on available exposure data for the mentioned product types
- The Europe-wide questionnaire survey identified unpublished datasets and contributing laboratories (about 40 responses with numerous questionnaires with details on available datasets). These contacts may develop into a expert network for exposure assessment for various product types.
- About 90 source documents containing exposure data have been introduced in the module ExpoData ("simple analysis")
- Experiences made with the Toolbox led to recommendations for improvements in the structural set-up and the user friendliness of the Toolbox
- Criteria for assessing the quality of exposure data were developed and discussed with JRC

## ■ Remaining work programme

Until the end of the project further results are expected regarding

- completion of data entry ("simple analysis") into the Toolbox
- experiences from case studies regarding the application of quality criteria for exposure data
- thorough numerical exploitation of exposure data in ExpoData (case studies on writing "complete analyses")
- contributions to the development and refinement of the modules ExpoData ("complete analysis") and ChemTest
- reporting on product type-specific data gaps, research needs, and testing strategies.

## ■ Further information

- <http://www.jrc.cec.eu.int/eis-chemrisks/toolbox.cfm>
- [http://www.jrc.cec.eu.int/eis-chemrisks/chemtest\\_phase1.cfm](http://www.jrc.cec.eu.int/eis-chemrisks/chemtest_phase1.cfm)
- or contact:
  - [klaus.schneider@fobig.de](mailto:klaus.schneider@fobig.de)
  - or
  - [majlinda.lahaniatis@jrc.it](mailto:majlinda.lahaniatis@jrc.it)